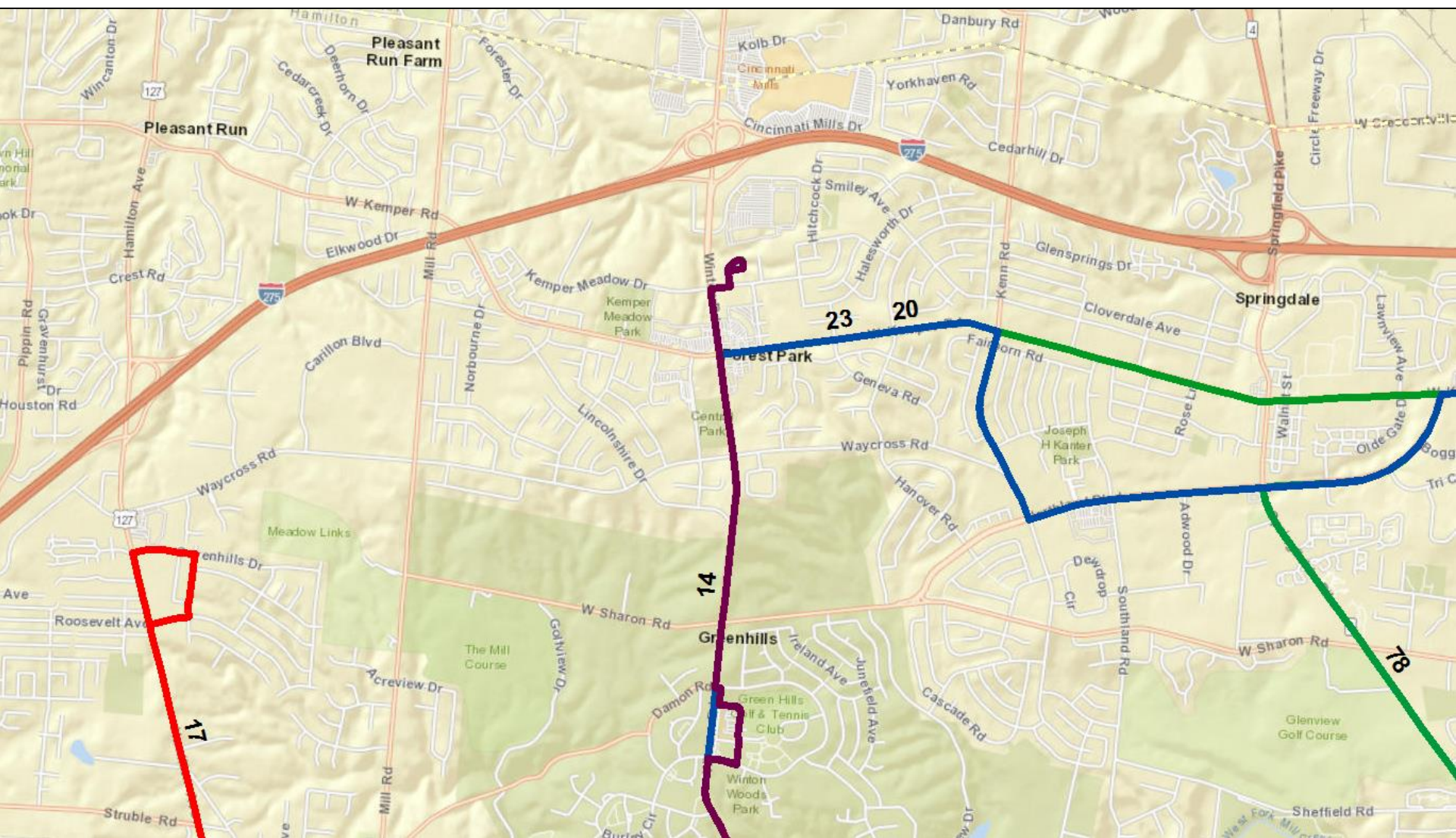


# *Current Routes Serving:* Forest Park

June 6, 2019

# Forest Park: All Routes —current



# Service Improvements within Forest Park

| Type of Improvement        | Routes Affected in Each Year |          |          |          |
|----------------------------|------------------------------|----------|----------|----------|
|                            | 1 st Year                    | 2nd Year | 3rd Year | 4th Year |
| Increased Weekday Span     | 20                           |          | 14X, 23X |          |
| New Weekday Service        |                              |          |          |          |
| Route Extension            |                              |          |          |          |
| 24-Hour Weekday Service    | 17, 78                       |          |          |          |
| Improved Peak Headway      | 20                           |          |          | 17, 78   |
| Improved Midday Headway    | 20                           |          |          | 17, 78   |
| Improved Evening Headway   | 20                           |          |          | 78       |
| Improved Saturday Span     | 20                           |          |          |          |
| 24-Hour Saturday Service   | 17, 78                       |          |          |          |
| Improved Saturday Headway  | 20                           |          |          |          |
| New Saturday Service       |                              |          |          |          |
| Improved Sunday Span       |                              |          |          |          |
| 24-Hour Sunday Service     | 17, 78                       |          |          |          |
| Improved Sunday Headway    | 17, 78                       |          |          |          |
| New Sunday Service         | 20                           |          |          |          |
| New Circulator (on-demand) |                              |          |          |          |

\*For more information, see Proposed System Changes by Route